



## 53204 Thrust ball bearings, single direction

- Popular item

### Thrust ball bearings, single direction

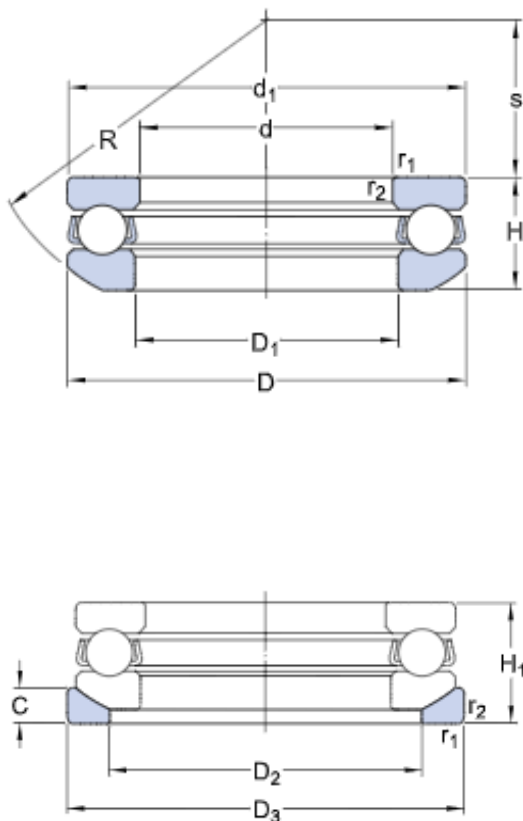
#### Bearing data

[Tolerances,](#)  
table 1

#### Bearing interfaces

[Seat tolerances for standard](#)  
[conditions,](#)  
[Tolerances and resultant fit](#)

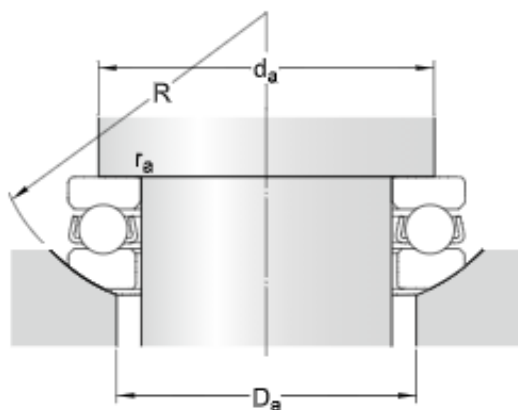
### Technical specification



#### DIMENSIONS

d	20 mm	Bore diameter
D	40 mm	Outside diameter
H	14.7 mm	Height
H <sub>1</sub>	17 mm	Height bearing including seat washer
d <sub>1</sub>	≈ 40 mm	Outside diameter shaft washer
D <sub>1</sub>	≈ 22 mm	Inner diameter housing washer
D <sub>2</sub>	30 mm	Inner diameter sphered seat washer
D <sub>3</sub>	42 mm	Outside diameter sphered housing washer
C	5 mm	Height sphered housing washer
R	36 mm	Radius sphered housing washer
s	18 mm	Centre height housing washer sphere
r <sub>1,2</sub>	min. 0.6 mm	Chamfer dimension washer

#### ABUTMENT DIMENSIONS



$d_a$  min. 32 mm Abutment diameter shaft

$D_a$  max. 30 mm Abutment diameter housing

$r_a$  max. 0.6 mm Fillet radius



## CALCULATION DATA

C	21.2 kN	Basic dynamic load rating
$C_0$	37.5 kN	Basic static load rating
$P_u$	1.4 kN	Fatigue load limit
	5 600 r/min	Reference speed
	8 000 r/min	Limiting speed
A	0.009	Minimum load factor

## MASS

0.1 kg	Mass bearing (including seat washer where applicable)
--------	-------------------------------------------------------

## ASSOCIATED PRODUCTS